



HOMES FOR SALE



228 Market St.
5 Bed/1.5 Bath
2,076 sq. ft.
Gloucester City



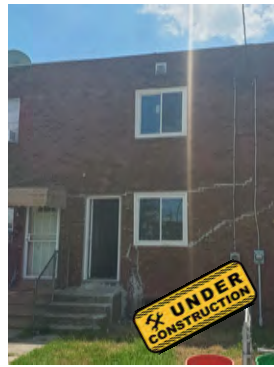
66 E. Centre St.
4 Bed/1.5 Bath
1,574 sq. ft.
Woodbury



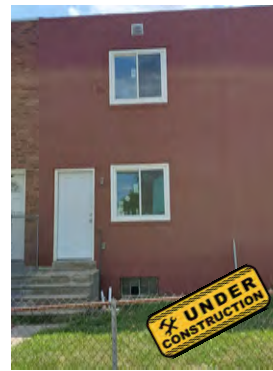
724 Washington St.
3 Bed/2.5 Bath
1,765 sq. ft.
Cooper Plaza



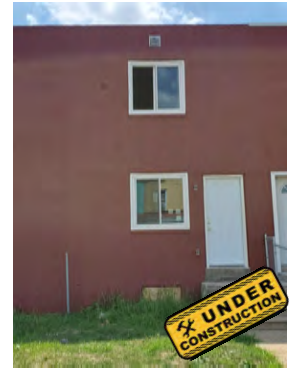
932 N. 21st St.
3 Bed/1.5 Bath
1,155 sq. ft.
Cramer Hill



905 N. 22nd St.
3 Bed/1.5 Bath
1,155 sq. ft.
Cramer Hill



921 N. 22nd St.
3 Bed/1.5 Bath
1,155 sq. ft.
Cramer Hill



923 N. 22nd St.
3 Bed/1.5 Bath
1,155 sq. ft.
Cramer Hill

Call today for pricing and availability!

856-966-8117



20 Church Street, Camden, NJ 08105

www.sjcscamden.org

Updated: July 21, 2020